

PERMIT DRAWING SHEET 5 OF 28

(SCALE: 1" = 50')

REMOVE AND RESET C/A FENCE AS NECESSARY FOR CONSTRUCTION

AREA NEEDED FOR RIGHT OF ENTRY APPROX. 1,920 SF

BANK/STREAM STABILIZATION
 INSTALL SPECIAL OUTLET PROTECTION
 EST 40 TONS CLASS II
 EST 9 TONS CLASS I
 EST 3 TONS CLASS B
 EST 44 SY GEO
 SEE DETAIL 1

PRIOR EASEMENT OBTAINED

REMOVE EXISTING RIP RAP PILED UP IN STREAM AND UTILIZE W/ OUTLET REPAIR TO FILL VOIDS AS NECESSARY

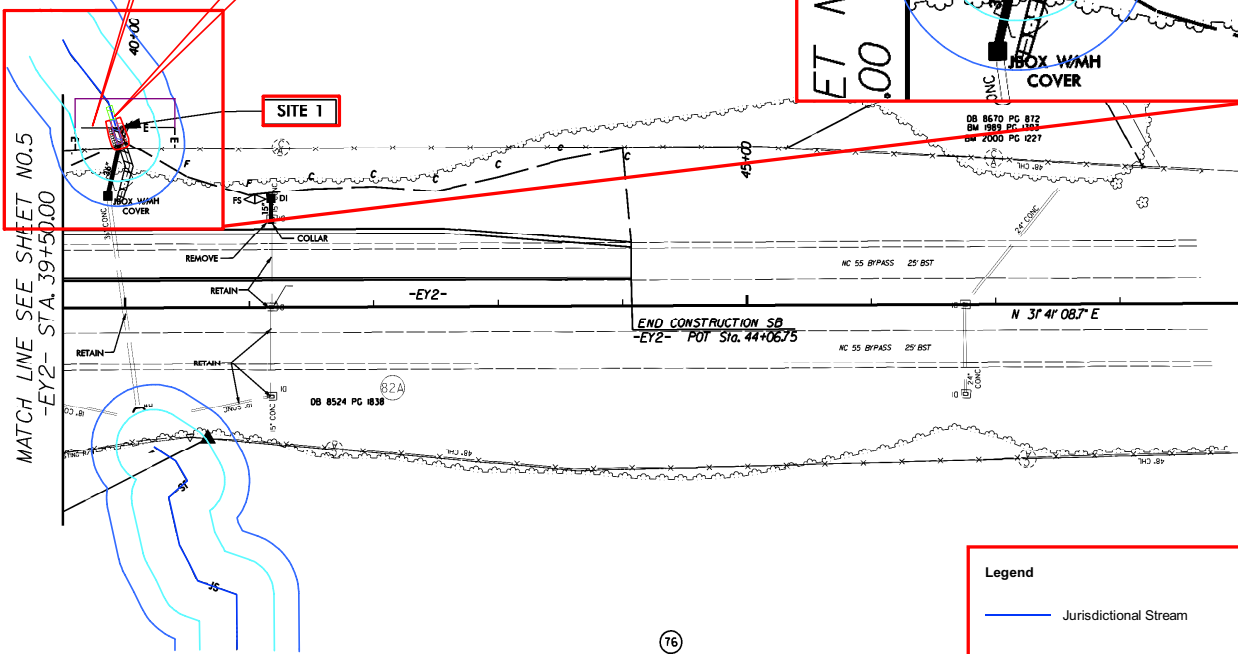
MATCH LINE SEE SHEET NO.5
 -EY2- STA. 39+50.00

SITE 1

ET NO.5
 .00

BOX WASH COVER

REVISIONS



Legend

- Jurisdictional Stream
- Buffer Zone 1
- Buffer Zone 2
- Rip Rap
- Prior Permit Impacts
- Temporary Stream Impacts
- Permanent Stream Impacts

1. BASE PLAN SHEET INFORMATION WAS PRODUCED BY OTHERS. INFORMATION SHOWN WITHIN RED BOXES IS PROPOSED AND RELEVANT FOR THIS PROJECT.
2. IMPACTS SHOWN AND IMPROVEMENTS RECOMMENDED ARE BASED ON THE NEED TO MAINTAIN AND REPAIR EXISTING NCDOT FACILITIES.
3. CONTRACTOR TO UTILIZE NCDOT TRAFFIC CONTROL STANDARD DRAWINGS FOR CONSTRUCTION ACTIVITIES AS NEEDED.
4. CONTRACTOR TO PROVIDE SHOP DRAWING FOR ACCESS TO THE CONSTRUCTION SITE, (STAYING WITHIN IMPACT LIMITS) INCLUDING EROSION CONTROL DEVICES AND LAYOUT. NCDOT APPROVAL OF ACCESS AND EROSION CONTROL PLAN WILL BE REQUIRED PRIOR TO BEGINNING CONSTRUCTION. SUPPLEMENTAL PDF PLAN SHEETS WITH CONTOURS WILL BE PROVIDED FOR CONTRACTOR USE FOR ACCESS AND EROSION CONTROL PLANS.
5. CONTRACTOR TO UTILIZE PUMP AROUND DETAILS 2D-2 AS NEEDED TO DEWATER AREAS TO CONSTRUCT COUNTERSUNK RIP RAP PADS AND STREAM BANK REPAIRS.
6. CONTRACTOR TO STABILIZE DISTURBED AREAS IN ACCORDANCE WITH NCDOT EROSION CONTROL STANDARD PROVISIONS. ANTICIPATE UTILIZING REFORESTATION STANDARD FOR WOODED AREAS AND SEEDING MIX FOR FILL SLOPES AND NON-WOODED AREAS THAT ARE DISTURBED.

NOTE: ON -EY2- THE CONTRACTOR SHALL REUSE AND RESET EXISTING GUARDRAIL IN LOCATIONS AS INDICATED ON THE PLANS. SEE SECTION 064 OF THE NCDOT 2006 STANDARD SPECIFICATIONS FOR ROADS AND STRUCTURES FOR ADDITIONAL REQUIREMENTS.

FOR -EY2- PROFILE SEE SHEET 28

REVISIONS